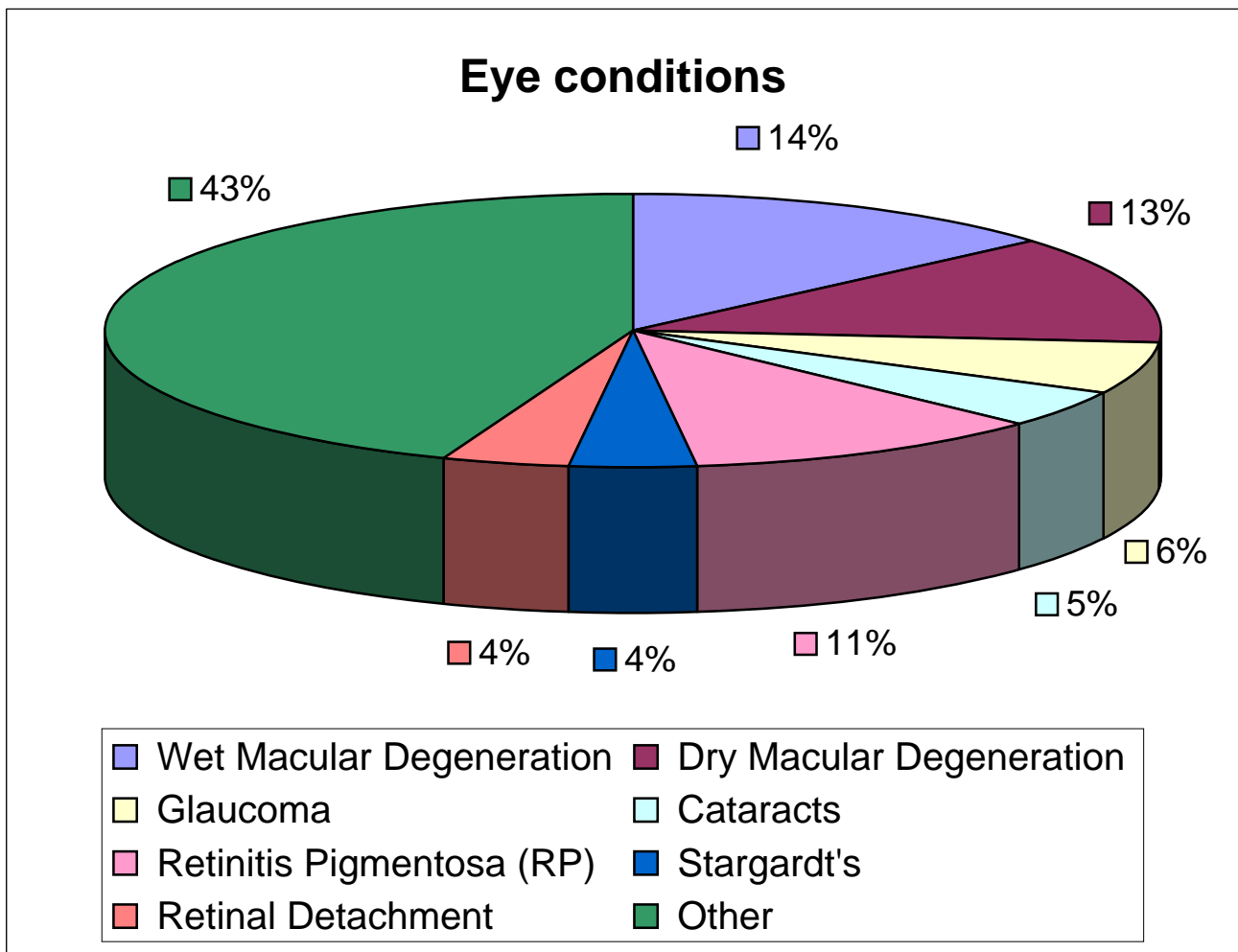


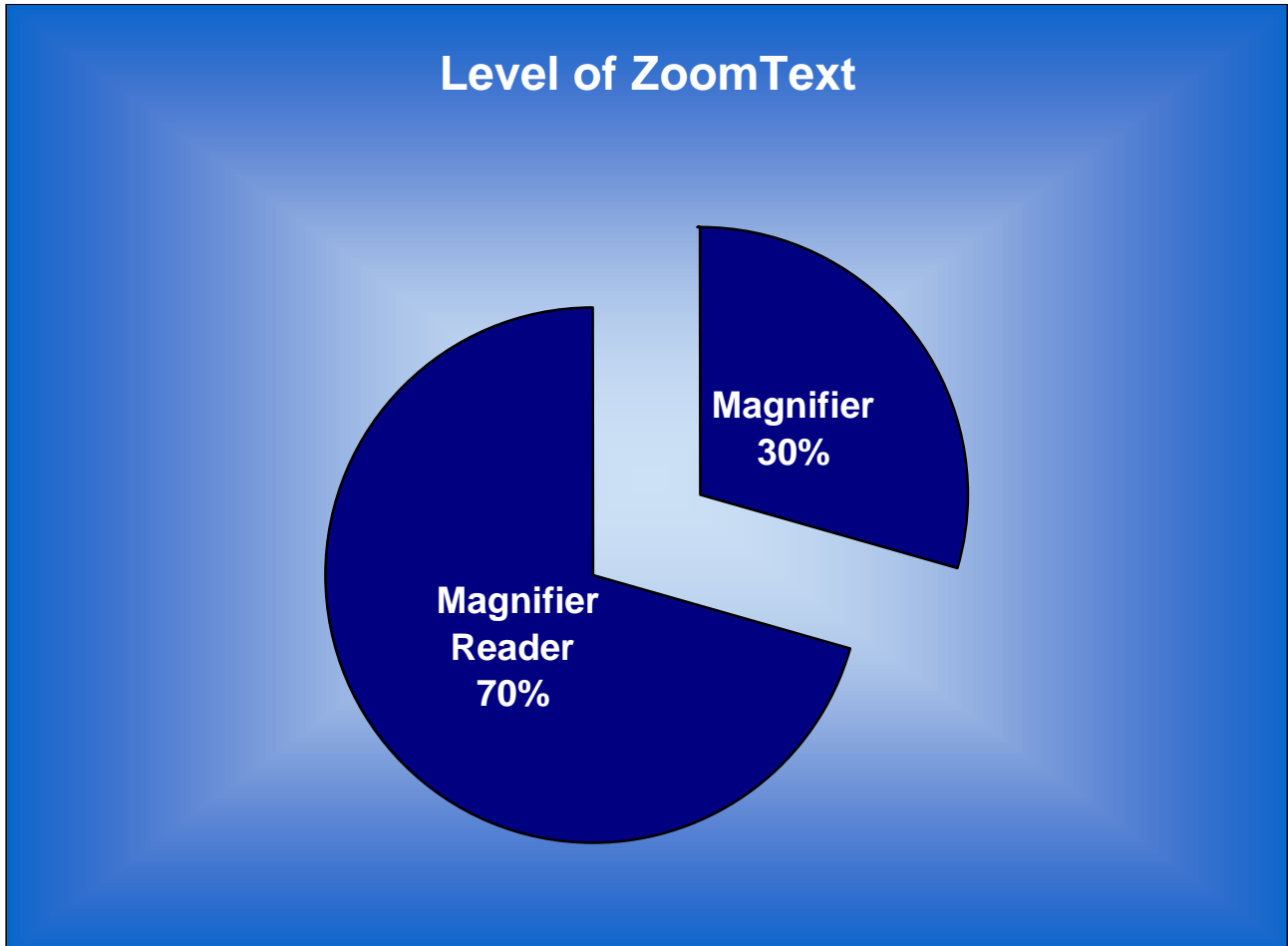
1. What eye condition do you have?

Wet Macular Degeneration	13.70%	94
Dry Macular Degeneration	12.70%	87
Glaucoma	6.30%	43
Cataracts	4.50%	31
Retinitis Pigmentosa (RP)	10.90%	75
Stargardt's	4.10%	28
Retinal Detachment	3.80%	26
Other	44.20%	304



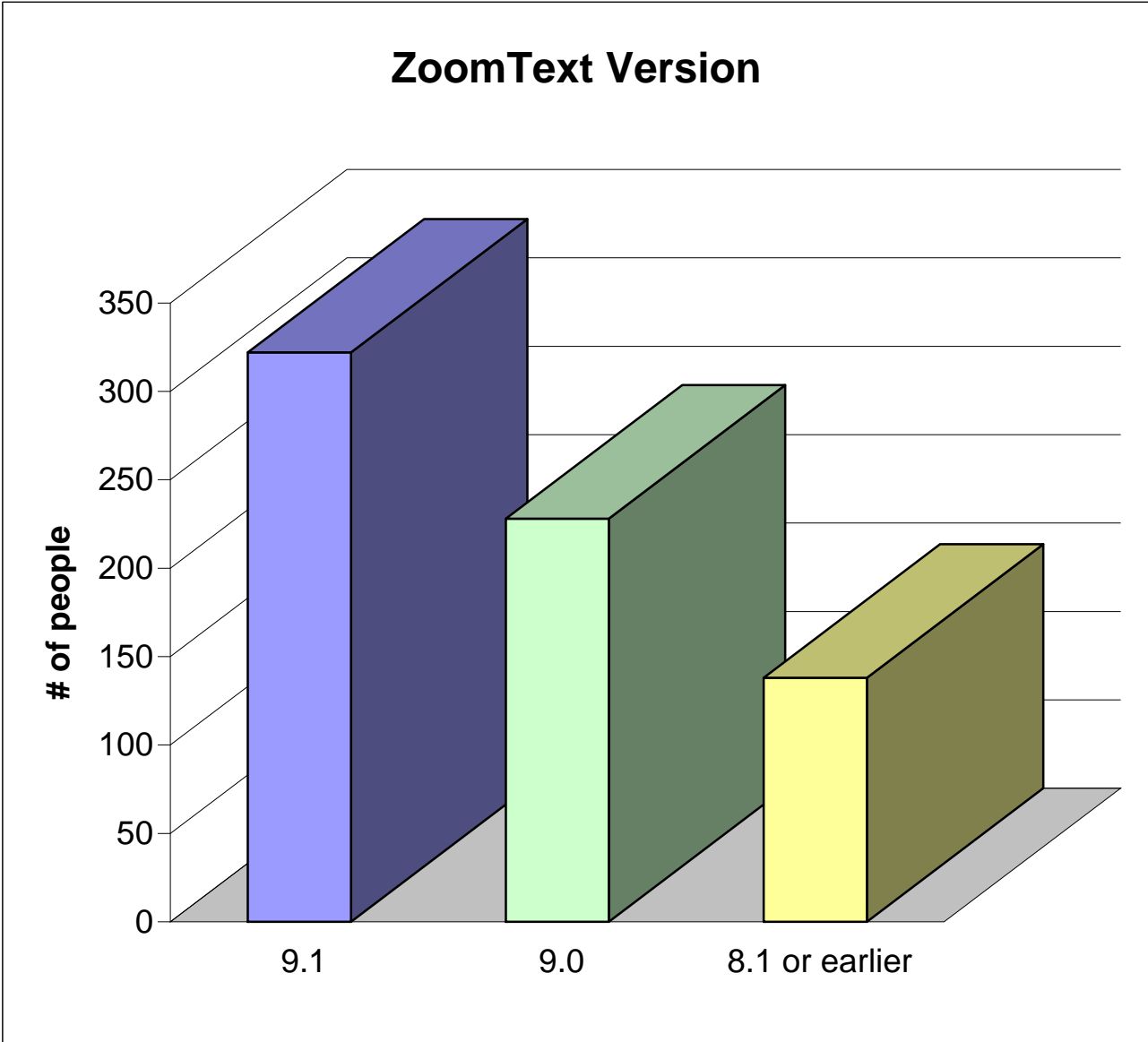
2. Do you use ZoomText Magnifier or Magnifier/Reader?

Magnifier	29.50%	203
Magnifier / Reader	70.50%	485



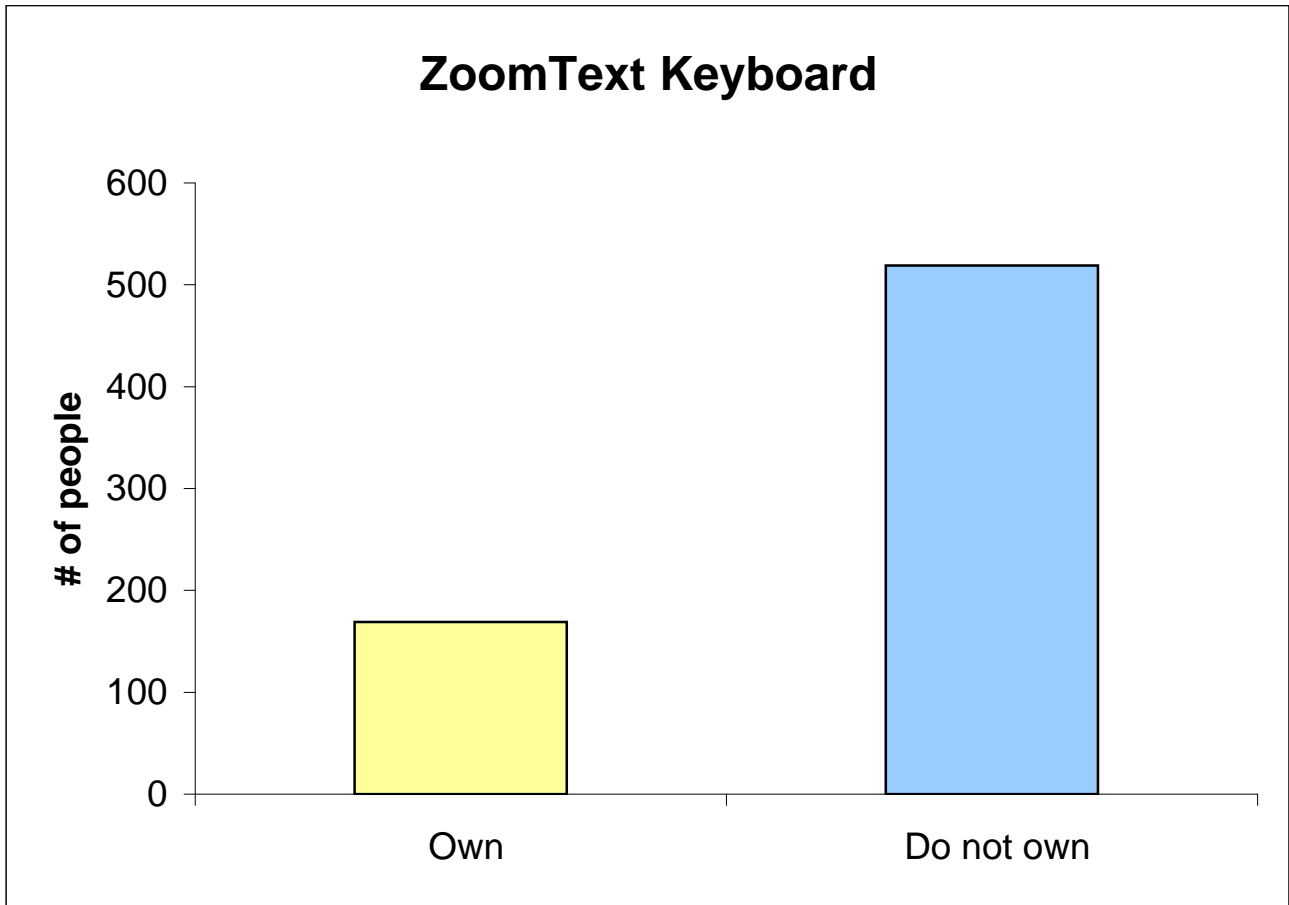
3. What version of ZoomText are you using?

9.1	46.80%	322
9.0	33.10%	228
8.1 or earlier	20.10%	138



4. Do you have a ZoomText Large-Print Keyboard?

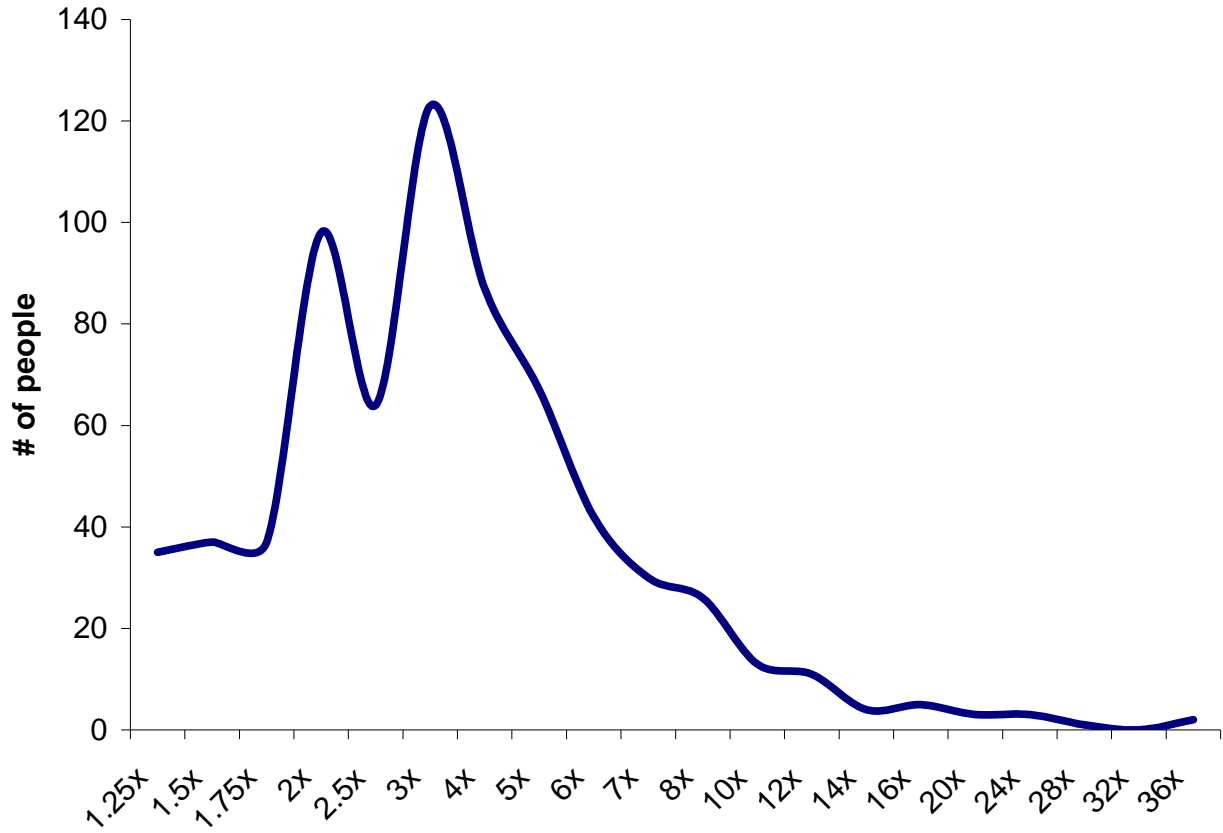
Own	24.60%	169
Do not own	75.40%	519



5. What magnification level do you run ZoomText at most often?

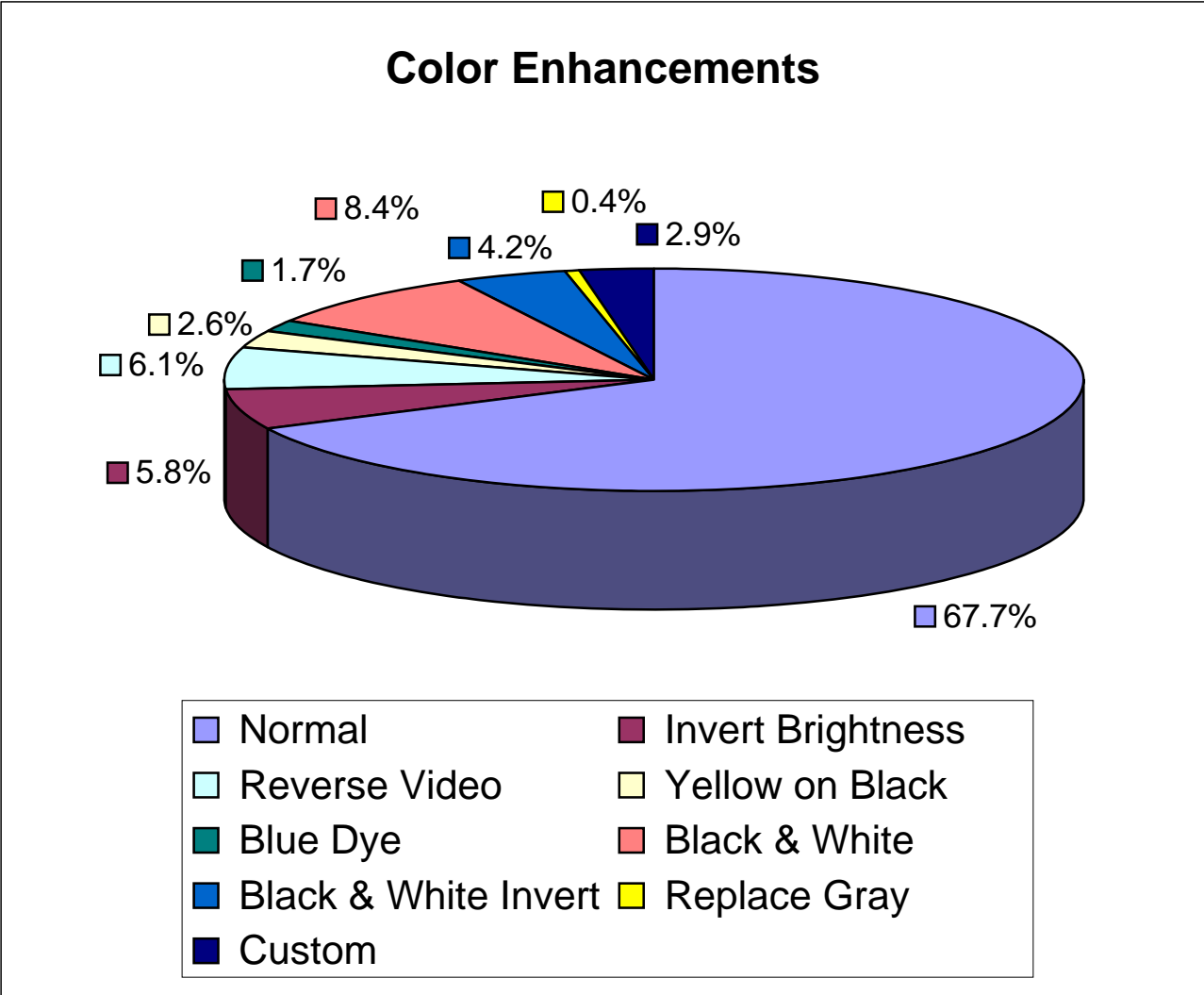
1.25x	5.10%	35
1.5x	5.40%	37
1.75x	5.40%	37
2x	14.20%	98
2.5x	9.30%	64
3x	17.90%	123
4x	12.70%	87
5x	9.70%	67
6x	6.10%	42
7x	4.40%	30
8x	3.80%	26
10x	1.90%	13
12x	1.60%	11
14x	0.60%	4
16x	0.70%	5
20x	0.40%	3
24x	0.40%	3
28x	0.20%	1
32x	0.00%	0
36x	0.30%	2

Magnification Level



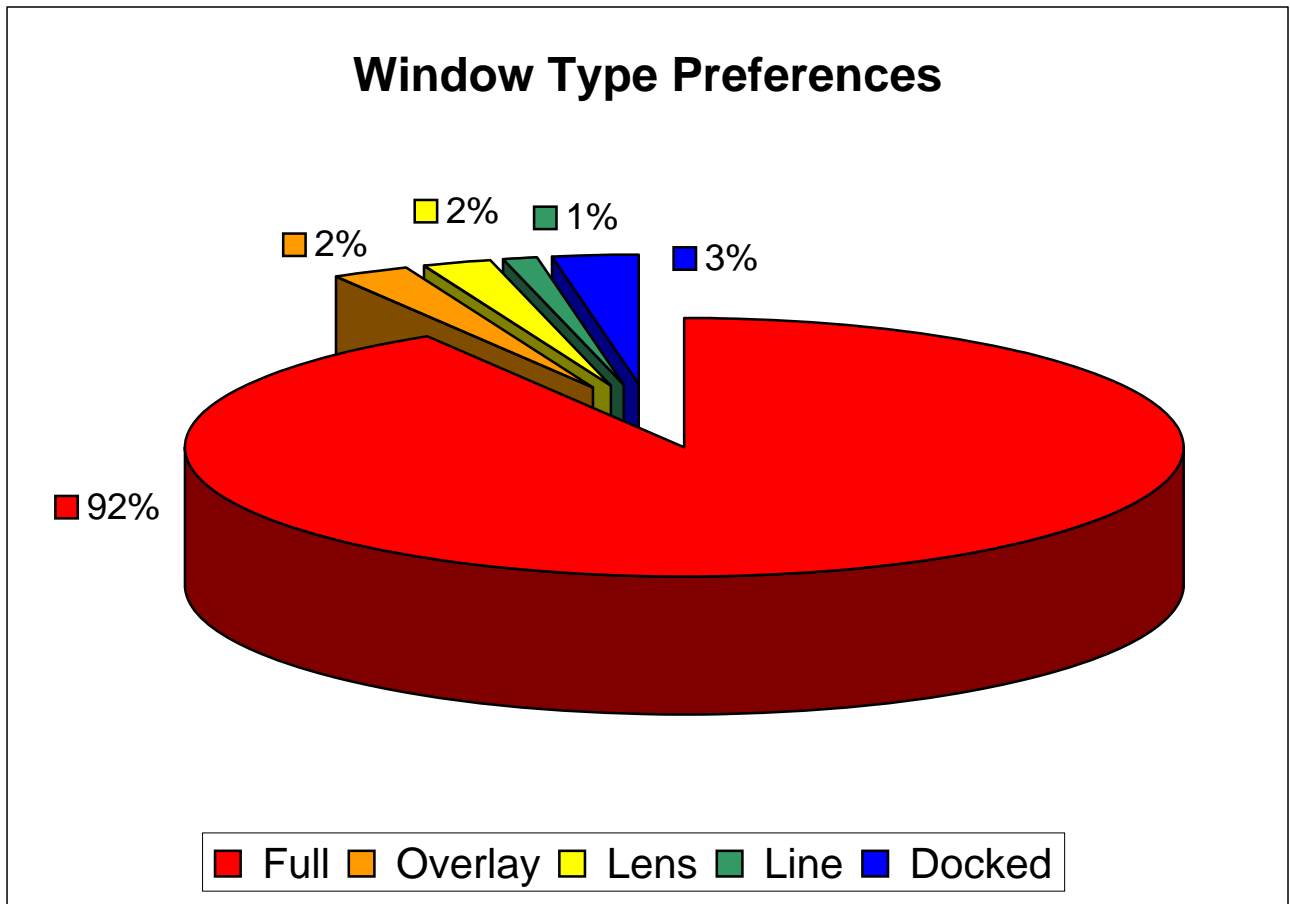
6. What color scheme do you typically use?

Normal	67.70%	466
Invert Brightness	5.80%	40
Reverse Video	6.10%	42
Yellow on Black	2.60%	18
Blue Dye	1.70%	12
Black & White	8.40%	58
Black & White Invert	4.20%	29
Replace Gray	0.40%	3
Custom	2.90%	20



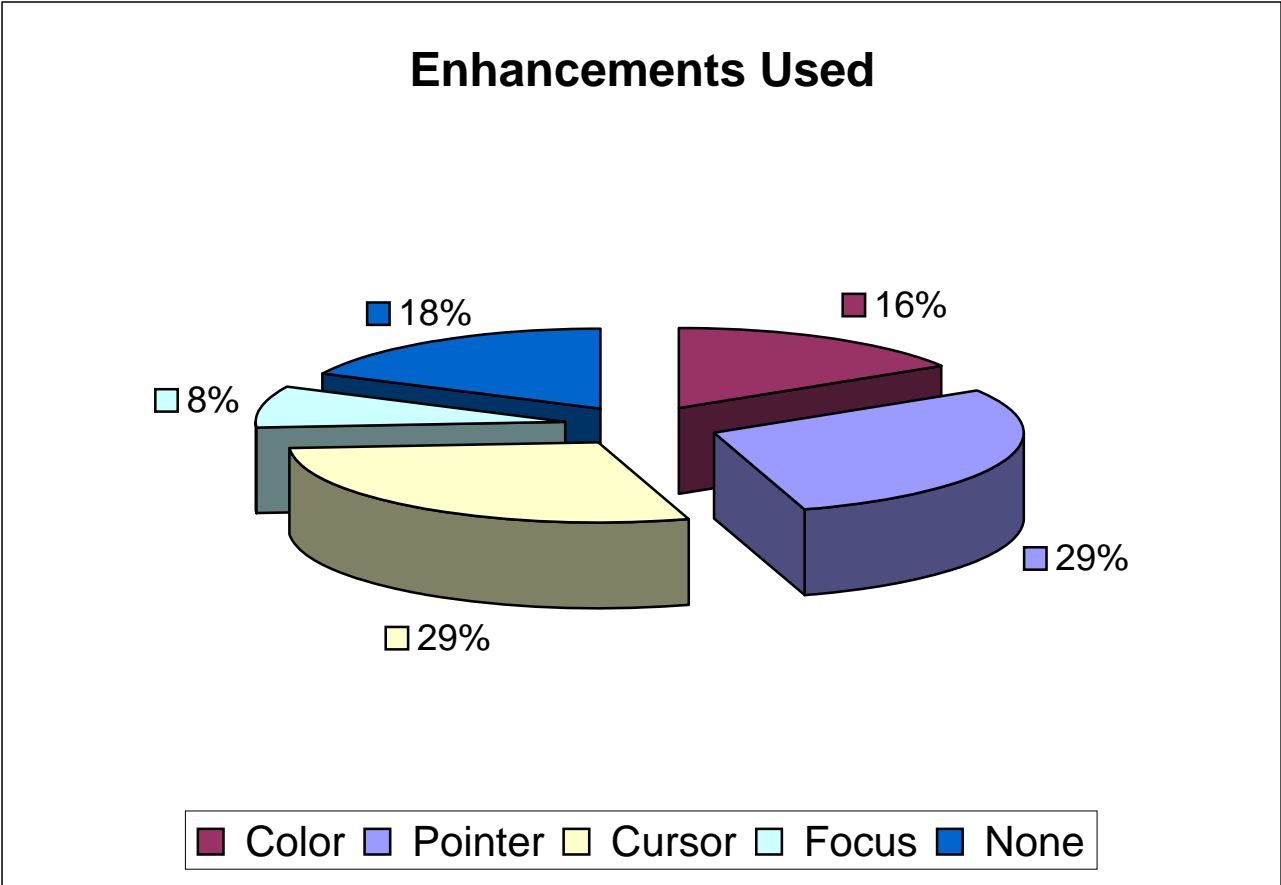
7. What window type do you prefer?

Full	91.40%	629
Overlay	2.30%	16
Lens	2.30%	16
Line	1.20%	8
Docked	2.80%	19



8. What enhancement(s) do you use on a regular basis?
(Please check all that apply)

Color	27.60%	190
Pointer	49.70%	342
Cursor	48.80%	336
Focus	14.20%	98
None	30.40%	209



9. What reading tool do you use the most?

AppReader	40.00%	275
DocReader	25.40%	175
Speak It Tool	7.70%	53
Reading Zones	2.60%	18
I don't have the Magnifier/Reader version	24.30%	167

